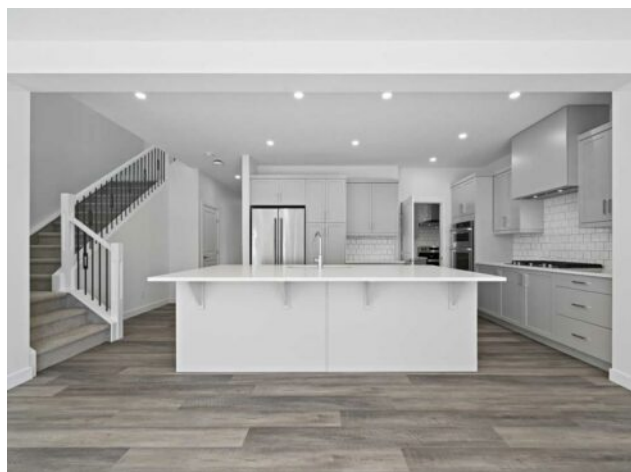


**430 Corner Glen Way NE**  
**Calgary, Alberta**

**MLS # A2253036**



**\$855,900**

<b>Division:</b>	Cornerstone		
<b>Type:</b>	Residential/House		
<b>Style:</b>	2 Storey		
<b>Size:</b>	2,739 sq.ft.	<b>Age:</b>	2025 (0 yrs old)
<b>Beds:</b>	5	<b>Baths:</b>	4
<b>Garage:</b>	Concrete Driveway, Double Garage Attached, Garage Door Opener, Garage		
<b>Lot Size:</b>	0.09 Acre		
<b>Lot Feat:</b>	Corner Lot, Irregular Lot		

<b>Heating:</b>	Forced Air, Natural Gas	<b>Water:</b>	Public
<b>Floors:</b>	Carpet, Tile, Vinyl Plank	<b>Sewer:</b>	-
<b>Roof:</b>	Asphalt Shingle	<b>Condo Fee:</b>	-
<b>Basement:</b>	Full, Unfinished	<b>LLD:</b>	-
<b>Exterior:</b>	Brick, Vinyl Siding, Wood Frame	<b>Zoning:</b>	R-G
<b>Foundation:</b>	Poured Concrete	<b>Utilities:</b>	-

**Features:** Double Vanity, High Ceilings, Kitchen Island, No Animal Home, No Smoking Home, Open Floorplan, Pantry, Quartz Counters, Smart Home, Tankless Hot Water, Vinyl Windows, Walk-In Closet(s)

**Inclusions:** N/A

**\*SIDE ENTRANCE\*CORNER HOEMSITE\*SPICE KITCHEN\*TWO UPPER PRIMARY BEDROOM SUITES\*** Amazing Design! Unique in Features! Brand New Home! Over 2700+ SF of Stylish design welcomes you into this stunning FIVE BEDROOM and 4 FULL BATH home located in the beautiful community of Cornerstone. You're welcomed to a thoughtfully designed living space that maximizes every inch while offering an abundance of space for your whole family to enjoy! The Gorgeous OPEN FLOOR PLAN invites you in to discover a lovely kitchen that boasts beautiful QUARTZ counter tops, sleek stainless steel KitchenAid appliance package with an upgraded GAS cooktop, KitchenAid Counter Depth French Door w/ Internal Water/Ice, KitchenAid 30" Built in Wall Oven/Microwave Combo and a Broan power pack built-in cabinet hoodfan. A large walk-in corner HIDDEN SPICE KITCHEN and beautiful extended over-sized flush centre Island that overlooks the generous great room and dining room-Ideal for all entertaining. A sizeable 5TH BEDROOM on the main floor, perfect for a large family or working from home as you have a full bath adjacent to the functional space with a private pocket door access. Upstairs, you will discover FOUR MORE BEDROOMS with TWO Primary Bedroom's boasting a 5pc en suite with dual vanities, stand alone shower, over sized bath and large walk-in closet. A centralized BONUS ROOM offers an additional living space and another full bath and 2nd floor laundry with window feature complete the level. ADDITIONAL FEATURES: Fit and Finish EXTRA, corner lot, professionally designed Birch Whisper Palette, rear glass sliding glass patio door, iron spindle railing added to stairs, convenient side entrance and raised 9' basement ceiling height and 3-piece rough-in plumbing. Situated close to the International Airport with quick

access to both Deer Foot Trail and Stony Trail along with new amenities being added to the community continuously, you will enjoy all Cornerstone has to offer. A brand new build with all of the difficult decisions decided along with a functional and intelligent floorplan for a large family. Perfect!!