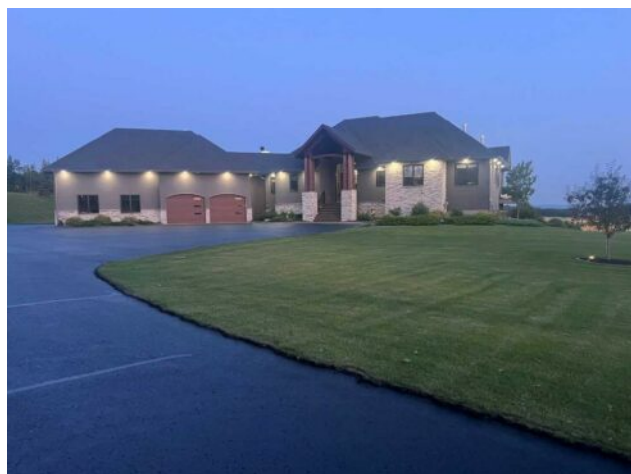


140, 38254 Range Road 265
Rural Red Deer County, Alberta

MLS # A2218510



\$2,400,000

Division:	Stone Ridge Estates		
Type:	Residential/House		
Style:	Acreage with Residence, Bungalow		
Size:	3,065 sq.ft.	Age:	2016 (9 yrs old)
Beds:	4	Baths:	4 full / 1 half
Garage:	220 Volt Wiring, Additional Parking, Driveway, Electric Gate, Front Drive, Garage		
Lot Size:	3.06 Acres		
Lot Feat:	Back Yard, Cul-De-Sac, Front Yard, Gentle Sloping, Landscaped, Many Trees		

Heating:	In Floor, Forced Air, Natural Gas	Water:	Well
Floors:	Carpet, Hardwood, Tile	Sewer:	Septic Tank
Roof:	Asphalt Shingle	Condo Fee:	-
Basement:	Separate/Exterior Entry, Finished, Full, Walk-Out To Grade	LLD:	18-38-26-W4
Exterior:	Stone, Stucco, Wood Frame	Zoning:	R-1
Foundation:	Poured Concrete	Utilities:	Electricity Connected, Natural Gas Connected

Features: Bar, Bookcases, Breakfast Bar, Built-in Features, Central Vacuum, Chandelier, Closet Organizers, Crown Molding, Double Vanity, French Door, High Ceilings, Kitchen Island, No Smoking Home, Open Floorplan, Pantry, Quartz Counters, Recessed Lighting, See Remarks, Separate Entrance, Soaking Tub, Stone Counters, Storage, Sump Pump(s), Tray Ceiling(s), Vinyl Windows, Walk-In Closet(s), Wet Bar, Wired for Data

Inclusions: FREEZER/FRIDGE, COMBO BUILT IN OVEN, GAS COOKTOP, DISHWASHERS (2), BBQ IN SUNROOM, ALL AUDIO EQUIPMENT IN FURNACE ROOM, WATER SOFTENER, A/C UNITS (2) WASHER, DRYER, GARAGE DOOR OPENER GARAGE DOOR CONTROLS, BAR FRIDGE (2) ALL BUILT IN HAYLEY GARAGE CABINETS, ALL WINDOW TREATMENTS RODS, DRAPERIES AND CUSTOM BLINDS (SOME WITH REMOTES) ALL GYM EQUIPMENT, HOT TUB AND COVER, 2 AWNINGS (1 is motorized)

EXPERIENCE UNRIVALED LUXURY LIVING IN THIS BREATHTAKING WALKOUT BUNGALOW ON 3.06 ACRES. Welcome to a lifestyle of ELEGANCE and sophistication in this custom-built masterpiece by the renowned SORRENTO CUSTOM HOMES, one of Red Deer's most prestigious builders. This stunning walkout bungalow offers the perfect blend of privacy, space and high-end living. Boasting 4 spacious bedrooms and 4.5 lavish bathrooms, this home is designed for comfort and style. The heart of the home dazzles with QUARTZ countertops, polished tiled floors and rich hardwood flooring, showcasing the exquisite craftsmanship & attention to detail throughout. The primary bedroom features tray ceilings, 2-sided gas fireplace with stone to ceiling, private balcony, glass railing and awning. Indulge in SPA-LIKE LUXURY everyday in this 5-piece ensuite that redefines indulgence. Greeted by heated floors, 6 ft soaker tub, custom steam shower, water closet, and makeup desk! The walk-in closet is completed with bench storage seating, lots of custom built in drawers, and a shoe rack. The main floor features a laundry room with sink and lots of cabinetry, a spacious office with custom built in maple cabinets, drawers and bookcase. THE ULTIMATE THREE SEASON ESCAPE~ where comfort meets outdoor living. The CROWN JEWEL of this extraordinary home is the 3-season room that is designed to captivate and indulge. Host summer parties, or enjoy a quiet, fire-lit evening. The built-in bbq, framed by sleek granite countertops that offer both STYLE & durability for effortless entertaining. As the sun sets, gather around the wood burning fireplace, where crackle of the flames set the mood for cozy nights & memorable conversations. All of this while taking in the breathtaking views of the city lights ~ A DAZZLING BACKDROP that transforms every evening into a private retreat. Step

into the lower level that's anything but ordinary. This fully developed basement is a masterpiece of comfort, design, & functionality - every inch thoughtfully crafted for elevated living. Completed with operational in floor heat, gas fireplace, full size wet bar with NEW BEVERAGE fridge, and incredible theatre room with ambient lighting that sets a relaxing and inviting mood. A spacious designated gym equipped with treadmill, elliptical & workout bench. Step outside through walkout doors onto a stamped concrete patio, a serene escape surrounded by professional landscaping, stone retaining wall, mulched flower beds and fully irrigated. Other great features include: pavement to your front door, rock water fountain, epoxy floors in garage, with drains, a 2-pc bath in garage, wash sink, Hayley cabinets, RV parking with power & sewer dump, solar power gate, insulated theatre room, ensuite custom steam shower, walnut & maple cabinets, custom wine room, water filtration system, reverse osmosis, newer hot tub, maintenance free decking with farmless glass railing. This estate home offers a RARE opportunity to enjoy the finest luxuries in life, everyday.